



Water-Data Report 2008

404450073470301 Local number Q 3660. 1

Northern Atlantic Coastal Plain aquifer system
Glacial Aquifer, Upper
Queens County, NY

LOCATION.--Lat 40°44'50.0", long 73°47'01.9" referenced to North American Datum of 1983, Queens County, NY, Hydrologic Unit 02030201, at 53rd Avenue, in center grass median, 49 ft west of 195th Street, Springfield Gardens.

GROUNDWATER RECORDS

WELL CHARACTERISTICS.--Depth 90 ft. Upper casing diameter 2 in; top of first opening 80 ft, bottom of last opening 85 ft.

DATUM.--Land-surface datum is 66 ft above National Geodetic Vertical Datum of 1929. Measuring point: Top of coupling, 3.46 ft below land-surface datum.

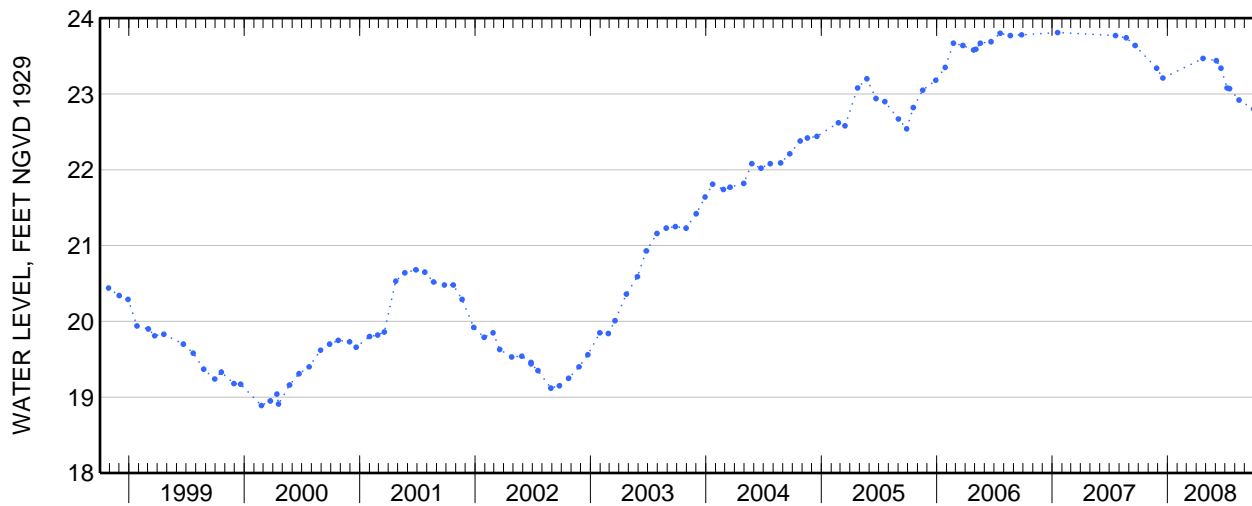
PERIOD OF RECORD.--April 1993 to current year.

GAGE.--Measurement with chalked steel tape by United States Geological Survey personnel.

EXTREMES FOR PERIOD OF RECORD.--Highest water level measured, 24.00 ft above sea level, July 28, 1998; lowest measured, 18.23 ft above sea level, September 28, 1995.

**WATER SURFACE ELEVATION IN FEET NGVD 1929
WATER YEAR OCTOBER 2007 TO SEPTEMBER 2008**

Date	Water level	Date	Water level
Nov 27	23.34	Jul 7	23.08
Dec 17	23.21	15	23.07
Apr 22	23.47	Aug 14	22.92
Jun 3	23.44	Sep 29	22.80
18	23.34		



WATER-QUALITY RECORDS

**WATER-QUALITY DATA
WATER YEAR OCTOBER 2007 TO SEPTEMBER 2008**

Part 1 of 20

[Remark codes: <, less than; E, estimated; M, presence verified but not quantified. Value qualifier codes: b, value extrapolated at low end; c, see result laboratory comment; d, diluted sample: method hi range exceeded; m, value is highly variable by this method; n, below the LRL and above the LT-MDL; t, below the long-term MDL.]

Date	Time	Depth to water level, feet below LSD (72019)	Water level, depth below MP, feet (61055)	Turbidity white light, det ang 90+/-30 degrees NTU (63675)	Dis-solved oxygen, mg/L (00300)	pH, water, unfltrd field, std units (00400)	Specific conductance, wat unfltrd 25 degC (00095)	Temperature, deg C (00010)	Calcium water unfltrd recover -able, mg/L (00916)	Magnesium, water, unfltrd recover -able, mg/L (00927)	Potassium, water, unfltrd recover -able, mg/L (00937)	Sodium, water, unfltrd recover -able, mg/L (00929)	Chloride, water, fltrd, mg/L (00940)
Jul 07...	1100	66.92	39.46	7.9	5.4	6.1	826	17.0	64.1	32.5	2.77	41.3	152

**WATER-QUALITY DATA
WATER YEAR OCTOBER 2007 TO SEPTEMBER 2008**

Part 2 of 20

[Remark codes: <, less than; E, estimated; M, presence verified but not quantified. Value qualifier codes: b, value extrapolated at low end; c, see result laboratory comment; d, diluted sample: method hi range exceeded; m, value is highly variable by this method; n, below the LRL and above the LT-MDL; t, below the long-term MDL.]

Date	Fluoride, water, fltrd, mg/L (00950)	Silica, water, fltrd, mg/L as SiO2 (00955)	Sulfate, water, fltrd, mg/L (00945)	Residue on evap. at 180degC, wat flt mg/L (70300)	Ammonia, water, fltrd, mg/L as N (00608)	Nitrate + nitrite, water, fltrd, mg/L as N (00631)	Nitrite, water, fltrd, mg/L as N (00613)	Ortho-phosphate, water, fltrd, mg/L as P (00671)	Arsenic, water, unfltrd (01002)	Barium, water, unfltrd recover -able, mg/L (01007)	Cadmium, water, unfltrd (01027)	Chromium, water, unfltrd recover -able, mg/L (01034)	Copper, water, unfltrd recover -able, mg/L (01042)
Jul 07...	<.12	27.7	62.7	532	.085	6.70d	E.001n	.033	E.57n	125	.07	6.0	2.3

**WATER-QUALITY DATA
WATER YEAR OCTOBER 2007 TO SEPTEMBER 2008**

Part 3 of 20

[Remark codes: <, less than; E, estimated; M, presence verified but not quantified. Value qualifier codes: b, value extrapolated at low end; c, see result laboratory comment; d, diluted sample: method hi range exceeded; m, value is highly variable by this method; n, below the LRL and above the LT-MDL; t, below the long-term MDL.]

Date	Iron, water, fltrd, recover -able, mg/L (01046)	Iron, water, unfltrd recover -able, mg/L (01045)	Lead, water, unfltrd recover -able, mg/L (01051)	Manganese, water, fltrd, recover -able, mg/L (01056)	Manganese, water, unfltrd recover -able, mg/L (01055)	Mercury, water, unfltrd recover -able, mg/L (71900)	Selenium, water, unfltrd (01147)	Silver, water, unfltrd recover -able, mg/L (01077)	Zinc, water, unfltrd recover -able, mg/L (01092)	1,2-Di-phenyl-hydra-zine, water, unfltrd (82626)	1-Naph-thol, water, fltrd 0.7u GF (49295)	2,4,6-Tri-chloro-phenol, water, unfltrd (34621)	2,4-Di-chloro-phenol, water, unfltrd (34601)
Jul 07...	36	968	6.50	16.6	64.9	E.007n	.51	.02	8.4	<.30	<.04mc	<.6	<.39

404450073470301 Local number Q 3660. 1—Continued

WATER-QUALITY DATA
WATER YEAR OCTOBER 2007 TO SEPTEMBER 2008

Part 4 of 20

[Remark codes: <, less than; E, estimated; M, presence verified but not quantified. Value qualifier codes: b, value extrapolated at low end; c, see result laboratory comment; d, diluted sample: method hi range exceeded; m, value is highly variable by this method; n, below the LRL and above the LT-MDL; t, below the long-term MDL.]

Date	2,4-Di-methyl-phenol, water, unfltrd µg/L (34606)	2,4-Di-nitro-phenol, water, unfltrd µg/L (34616)	2,4-Di-nitro-toluene, water, unfltrd µg/L (34611)	2,6-Di-ethyl-aniline, water, fltrd 0.7u GF µg/L (82660)	2,6-Di-nitro-toluene, water, unfltrd µg/L (34626)	2Chloro -2',6'-diethyl acet-anilide, water, fltrd µg/L (61618)	CIAT, water, fltrd µg/L (04040)	2-Chloro-naphthalene, water, unfltrd µg/L (34581)	2-chloro-phenol, water, unfltrd µg/L (34586)	2-Ethyl-6-methyl-aniline, water, fltrd µg/L (61620)	2-Methyl-4,6-dinitro-phenol, water, unfltrd µg/L (34657)	2-nitro-phenol, water, unfltrd µg/L (34591)	3,3'-Dichloro-benzidine, water, unfltrd µg/L (34631)
Jul							E.008mn c						
07...	<.6	<.80mc	<.43	<.006	<.43	<.010		<.2	<.42	<.010mc	<.77mc	<.6	<.4mc

WATER-QUALITY DATA
WATER YEAR OCTOBER 2007 TO SEPTEMBER 2008

Part 5 of 20

[Remark codes: <, less than; E, estimated; M, presence verified but not quantified. Value qualifier codes: b, value extrapolated at low end; c, see result laboratory comment; d, diluted sample: method hi range exceeded; m, value is highly variable by this method; n, below the LRL and above the LT-MDL; t, below the long-term MDL.]

Date	3,4-Di-chloro-aniline, water, fltrd µg/L (61625)	4-Bromo-phenyl phenyl ether, water, unfltrd µg/L (34636)	4-Chloro-2methyl phenol, water, fltrd µg/L (61633)	4-Chloro-3-methyl phenol, water, unfltrd µg/L (34452)	4-Chloro-phenyl ether, water, unfltrd µg/L (34641)	4-Nitro-phenol, water, unfltrd µg/L (34646)	9H-Fluorene, water, unfltrd µg/L (34381)	Ace-naphth-ene, water, unfltrd µg/L (34205)	Ace-naphth-ylenes, water, unfltrd µg/L (34200)	Aceto-chlor, water, fltrd µg/L (49260)	Ala-chlor, water, fltrd µg/L (46342)	Aldrin, water, unfltrd µg/L (39330)	alpha-Endo-sulfan, water, unfltrd µg/L (39388)
Jul													
07...	<.006mc	<.36	<.005mc	<.55	<.34	<.51mc	<.33	<.28	Mt	<.006	<.006	<.01	<.01

WATER-QUALITY DATA
WATER YEAR OCTOBER 2007 TO SEPTEMBER 2008

Part 6 of 20

[Remark codes: <, less than; E, estimated; M, presence verified but not quantified. Value qualifier codes: b, value extrapolated at low end; c, see result laboratory comment; d, diluted sample: method hi range exceeded; m, value is highly variable by this method; n, below the LRL and above the LT-MDL; t, below the long-term MDL.]

Date	Anthra-cene, water, unfltrd µg/L (34220)	Atra-zine, water, fltrd µg/L (39632)	Azin-phos-methyl oxon, water, fltrd µg/L (61635)	Azin-phos-methyl, water, fltrd 0.7u GF µg/L (82686)	Ben-flur-alin, water, fltrd 0.7u GF µg/L (82673)	Benzo-[a]-anthra-cene, water, unfltrd µg/L (34526)	Benzo-[a]-pyrene, water, unfltrd µg/L (34247)	Benzo-[b]-fluor-anthene, water, unfltrd µg/L (34230)	Benzo-[ghi]-per-ylenes, water, unfltrd µg/L (34521)	Benzo-[k]-fluor-anthene, water, unfltrd µg/L (34242)	Benzyln-butyl phthal-ate, water, unfltrd µg/L (34292)	Bis(2-chloro-ethoxy) methane, water, unfltrd µg/L (34278)	Bis(2-chloro-ethyl) ether, water, unfltrd µg/L (34273)
Jul													
07...	Mt	<.007	<.04mc	<.120mc	<.010	<.26	Mt	Mt	Mt	Mt	<.4	<.35	<.30

404450073470301 Local number Q 3660. 1—Continued

WATER-QUALITY DATA
WATER YEAR OCTOBER 2007 TO SEPTEMBER 2008

Part 7 of 20

[Remark codes: <, less than; E, estimated; M, presence verified but not quantified. Value qualifier codes: b, value extrapolated at low end; c, see result laboratory comment; d, diluted sample: method hi range exceeded; m, value is highly variable by this method; n, below the LRL and above the LT-MDL; t, below the long-term MDL.]

Date	Bis(2-chloro-iso-propyl) ether, wat unf µg/L (34283)	Bis(2-ethyl-hexyl) phthalate, wat unf µg/L (39100)	Carbaryl, water, fltrd 0.7u GF µg/L (82680)	Chlor-dane, technical, water, unfltrd µg/L (39350)	Chlor-pyrifos, water, fltrd, µg/L (61636)	Chlor-pyrifos, water, fltrd, µg/L (38933)	Chrys-ene, water, unfltrd µg/L (34320)	cis-Per-methrin, water, fltrd 0.7u GF µg/L (82687)	Cyflu-thrin, water, fltrd, µg/L (61585)	Cyper-methrin, water, fltrd, µg/L (61586)	DCPA, water, fltrd 0.7u GF µg/L (82682)	Desulf-inyl-fipro-nil, water, fltrd, µg/L (62170)	Diazi-non, water, fltrd, µg/L (39572)
Jul 07...	<.38	<2	<.060mc	<.1	<.06mc	<.005	<.33	<.010	<.016mc	<.014mc	<.003	<.012	<.005

WATER-QUALITY DATA
WATER YEAR OCTOBER 2007 TO SEPTEMBER 2008

Part 8 of 20

[Remark codes: <, less than; E, estimated; M, presence verified but not quantified. Value qualifier codes: b, value extrapolated at low end; c, see result laboratory comment; d, diluted sample: method hi range exceeded; m, value is highly variable by this method; n, below the LRL and above the LT-MDL; t, below the long-term MDL.]

Date	Di-benzo-[a,h]-anthracene, wat unf µg/L (34556)	Dicro-tophos, water, fltrd, µg/L (38454)	Diel-drin, water, fltrd, µg/L (39381)	Diel-drin, water, unfltrd µg/L (39380)	Di-ethyl phthalate, water, unfltrd µg/L (34336)	Dimeth-oate, water, fltrd 0.7u GF µg/L (82662)	Di-methyl phthalate, water, unfltrd µg/L (34341)	Di-n-butyl phthalate, water, unfltrd µg/L (39110)	Di-n-octyl phthalate, water, unfltrd µg/L (34596)	Endrin, water, unfltrd µg/L (39390)	Ethion monoxon, water, fltrd, µg/L (61644)	Ethion, water, fltrd, µg/L (82346)	Fenami-phos sulfone, water, fltrd, µg/L (61645)
Jul 07...	<.4	<.08mc	<.009	<.008	<.61	<.006mc	<.59	<.4	<.4	<.01	<.02mc	<.006	<.053

WATER-QUALITY DATA
WATER YEAR OCTOBER 2007 TO SEPTEMBER 2008

Part 9 of 20

[Remark codes: <, less than; E, estimated; M, presence verified but not quantified. Value qualifier codes: b, value extrapolated at low end; c, see result laboratory comment; d, diluted sample: method hi range exceeded; m, value is highly variable by this method; n, below the LRL and above the LT-MDL; t, below the long-term MDL.]

Date	Fenami-phos sulf-oxide, water, fltrd, µg/L (61646)	Fenami-phos, water, fltrd, µg/L (61591)	Desulf-inyl-fipro-nil, amide, wat flt µg/L (62169)	Fipro-nil sulfide, water, fltrd, µg/L (62167)	Fipro-nil sulfone, water, fltrd, µg/L (62168)	Fipro-nil, water, fltrd, µg/L (62166)	Fluor-anthene, water, unfltrd µg/L (34376)	Fonofos, water, fltrd, µg/L (04095)	Hepta-chlor epoxide, water, unfltrd µg/L (39420)	Hepta-chlor, water, unfltrd µg/L (39410)	Hexa-chloro-benzene, water, unfltrd µg/L (39700)	Hexa-chloro-cyclo-penta-diene, wat unf µg/L (34386)	Hexa-zinone, water, fltrd, µg/L (04025)
Jul 07...	<.20mc	<.03	<.029mc	<.013	<.024	<.020mc	Mt	<.010	<.009	<.01	<.30	<.4mc	<.008

404450073470301 Local number Q 3660. 1—Continued

WATER-QUALITY DATA
WATER YEAR OCTOBER 2007 TO SEPTEMBER 2008

Part 10 of 20

[Remark codes: <, less than; E, estimated; M, presence verified but not quantified. Value qualifier codes: b, value extrapolated at low end; c, see result laboratory comment; d, diluted sample: method hi range exceeded; m, value is highly variable by this method; n, below the LRL and above the LT-MDL; t, below the long-term MDL.]

Date	Indeno- [1,2,3- cd]- pyrene, water, unfltrd µg/L (34403)	lpro- dione, water, fltrd µg/L (61593)	Isofen- phos, water, fltrd µg/L (61594)	Iso- phorone water, unfltrd µg/L (34408)	Lindane water, unfltrd µg/L (39340)	Mala- oxon, water, fltrd µg/L (61652)	Mala- thion, water, fltrd µg/L (39532)	Meta- laxyl, water, fltrd µg/L (61596)	Methid- athion, water, fltrd µg/L (61598)	Methyl acetate water, unfltrd µg/L (77032)	Methyl para- oxon, water, fltrd µg/L (61664)	Methyl para- thion, water, fltrd 0.7u GF µg/L (82667)	MBAS, water, unfltrd mg/L (38260)
Jul 07...	Mt	<.01mc	<.006	<.4	<.014	<.020	<.016	<.007	<.004	<.4	<.01mc	<.008	<.10

WATER-QUALITY DATA
WATER YEAR OCTOBER 2007 TO SEPTEMBER 2008

Part 11 of 20

[Remark codes: <, less than; E, estimated; M, presence verified but not quantified. Value qualifier codes: b, value extrapolated at low end; c, see result laboratory comment; d, diluted sample: method hi range exceeded; m, value is highly variable by this method; n, below the LRL and above the LT-MDL; t, below the long-term MDL.]

Date	Metola- chlor, water, fltrd µg/L (39415)	Metri- buzin, water, fltrd µg/L (82630)	Mirex, water, unfltrd µg/L (39755)	Myclo- butanil water, fltrd µg/L (61599)	Nitro- benzene water, unfltrd µg/L (34447)	N- Nitroso -di- methyl- amine, wat unf µg/L (34438)	N- Nitroso -di-n- propyl- amine, wat unf µg/L (34428)	N- Nitroso -di- phenyl- amine, wat unf µg/L (34433)	p,p'- DDD, water, unfltrd µg/L (39360)	p,p'- DDE, water, unfltrd µg/L (39365)	p,p'- DDT, water, unfltrd µg/L (39370)	p,p'- Meth- oxy- chlor, water, unfltrd µg/L (39480)	PCBs, water, unfltrd µg/L (39516)
Jul 07...	<.010	<.012	<.006	<.010	<.21	<.33	<.4	<.4	<.016	<.014	<.010	<.002	<.1

WATER-QUALITY DATA
WATER YEAR OCTOBER 2007 TO SEPTEMBER 2008

Part 12 of 20

[Remark codes: <, less than; E, estimated; M, presence verified but not quantified. Value qualifier codes: b, value extrapolated at low end; c, see result laboratory comment; d, diluted sample: method hi range exceeded; m, value is highly variable by this method; n, below the LRL and above the LT-MDL; t, below the long-term MDL.]

Date	Pendi- meth- alin, water, fltrd 0.7u GF µg/L (82683)	Penta- chloro- phenol, water, unfltrd µg/L (39032)	Phenan- threne, water, unfltrd µg/L (34461)	Phenol, water, unfltrd µg/L (34694)	Phorate oxon, water, fltrd µg/L (61666)	Phorate water, fltrd 0.7u GF µg/L (82664)	Phosmet oxon, water, fltrd µg/L (61668)	Phosmet water, fltrd µg/L (61601)	Prome- ton, water, fltrd µg/L (04037)	Prome- tryn, water, fltrd µg/L (04036)	Propy- zamide, water, fltrd 0.7u GF µg/L (82676)	Pyrene, water, unfltrd µg/L (34469)	Sima- zine, water, fltrd µg/L (04035)
Jul 07...	<.012	<.4mc	<.32	<.4	<.03mc	<.040	<.05mc	<.008mc	<.01	<.006	<.004	Mt	<.006

404450073470301 Local number Q 3660. 1—Continued

WATER-QUALITY DATA
WATER YEAR OCTOBER 2007 TO SEPTEMBER 2008

Part 13 of 20

[Remark codes: <, less than; E, estimated; M, presence verified but not quantified. Value qualifier codes: b, value extrapolated at low end; c, see result laboratory comment; d, diluted sample: method hi range exceeded; m, value is highly variable by this method; n, below the LRL and above the LT-MDL; t, below the long-term MDL.]

Date	Tebu- thiuron water, fltrd 0.7u GF µg/L (82670)	Ter- bufos sulfone water, fltrd, 0.7u GF µg/L (61674)	Terbu- fos, water, fltrd 0.7u GF µg/L (82675)	Ter- buthyl- azine, water, fltrd, 0.7u GF µg/L (04022)	tert- Amyl alcohol water, unfltrd µg/L (77073)	tert- Butyl- alcohol water, unfltrd µg/L (77035)	Toxa- phene, water, unfltrd µg/L (39400)	Tribu- phos, water, fltrd, 0.7u GF µg/L (61610)	Tri- flur- alin, water, fltrd 0.7u GF µg/L (82661)	1,1,1,2- Tetra- chloro- ethane, water, unfltrd µg/L (77562)	1,1,1- Tri- chloro- ethane, water, unfltrd µg/L (34506)	1,1,2,2- Tetra- chloro- ethane, water, unfltrd µg/L (34516)	CFC-113 water, unfltrd µg/L (77652)
Jul 07...	<.02	<.04	<.02	<.01	<.6	<2.00	<1	<.035mc	<.009	<.04	E.10b	<.10	<.04

WATER-QUALITY DATA
WATER YEAR OCTOBER 2007 TO SEPTEMBER 2008

Part 14 of 20

[Remark codes: <, less than; E, estimated; M, presence verified but not quantified. Value qualifier codes: b, value extrapolated at low end; c, see result laboratory comment; d, diluted sample: method hi range exceeded; m, value is highly variable by this method; n, below the LRL and above the LT-MDL; t, below the long-term MDL.]

Date	1,1,2- Tri- chloro- ethane, water, unfltrd µg/L (34511)	1,1-Di- chloro- ethane, water, unfltrd µg/L (34496)	1,1-Di- chloro- ethene, water, unfltrd µg/L (34501)	1,1-Di- chloro- propene water, unfltrd µg/L (77168)	1,2,3,4- -Tetra- methyl- benzene water, unfltrd µg/L (49999)	1,2,3,5- -Tetra- methyl- benzene water, unfltrd µg/L (50000)	1,2,3- Tri- chloro- benzene water, unfltrd µg/L (77613)	1,2,3- Tri- chloro- propane water, unfltrd µg/L (77443)	1,2,3- Tri- methyl- benzene water, unfltrd µg/L (77221)	1,2,4- Tri- chloro- benzene water, unfltrd µg/L (34551)	1,2,4- Tri- methyl- benzene water, unfltrd µg/L (77222)	Dibromo chloro- propane water, unfltrd µg/L (82625)	1,2-Di- bromo- ethane, water, unfltrd µg/L (77651)
Jul 07...	<.06	.47	<.02	<.04	<.1	<.1	<.1	<.12	<.1	<.1	<.04	<.5	<.04

WATER-QUALITY DATA
WATER YEAR OCTOBER 2007 TO SEPTEMBER 2008

Part 15 of 20

[Remark codes: <, less than; E, estimated; M, presence verified but not quantified. Value qualifier codes: b, value extrapolated at low end; c, see result laboratory comment; d, diluted sample: method hi range exceeded; m, value is highly variable by this method; n, below the LRL and above the LT-MDL; t, below the long-term MDL.]

Date	1,2-Di- chloro- benzene water, unfltrd µg/L (34536)	1,2-Di- chloro- ethane, water, unfltrd µg/L (32103)	1,2-Di- chloro- propane water, unfltrd µg/L (34541)	1,3,5- Tri- methyl- benzene water, unfltrd µg/L (77226)	1,3-Di- chloro- benzene water, unfltrd µg/L (34566)	1,3-Di- chloro- propane water, unfltrd µg/L (77173)	1,4-Di- chloro- benzene water, unfltrd µg/L (34571)	2,2-Di- chloro- propane water, unfltrd µg/L (77170)	2- Chloro- toluene water, unfltrd µg/L (77275)	2- Ethyl- toluene water, unfltrd µg/L (77220)	3- Chloro- propene water, unfltrd µg/L (78109)	4- Chloro- toluene water, unfltrd µg/L (77277)	4-Iso- propyl- toluene water, unfltrd µg/L (77356)
Jul 07...	<.02	<.1	<.02	<.04	<.04	<.1	<.02	<.06	<.04	<.04	<.08mc	<.04	<.08

404450073470301 Local number Q 3660. 1—Continued

WATER-QUALITY DATA
WATER YEAR OCTOBER 2007 TO SEPTEMBER 2008

Part 16 of 20

[Remark codes: <, less than; E, estimated; M, presence verified but not quantified. Value qualifier codes: b, value extrapolated at low end; c, see result laboratory comment; d, diluted sample: method hi range exceeded; m, value is highly variable by this method; n, below the LRL and above the LT-MDL; t, below the long-term MDL.]

Date	Acetone	Acrylo-	Benzene	Bromo-	Bromo-	Bromo-	Tri-	Bromo-	Carbon	Chloro-	Chloro-	Chloro-	
	water,	nitrile	water,	benzene	chloro-	di-	bromo-	methane	di-	benzene	ethane,	methane	
	unfltrd	water,	unfltrd	unfltrd	water,	water,	water,	unfltrd	water,	unfltrd	unfltrd	unfltrd	
	μg/L	unfltrd	μg/L	μg/L	μg/L	μg/L	μg/L	μg/L	μg/L	μg/L	μg/L	μg/L	
	(81552)	(34215)	(34030)	(81555)	(77297)	(32101)	(50002)	(32104)	(34413)	(77041)	(34301)	(34311)	(34418)
Jul													
07...	<4	<.4	<.02	<.02	<.06	<.04	<.1	<.08	<.4mc	<.06	<.02	<.1	<.1mc

WATER-QUALITY DATA
WATER YEAR OCTOBER 2007 TO SEPTEMBER 2008

Part 17 of 20

[Remark codes: <, less than; E, estimated; M, presence verified but not quantified. Value qualifier codes: b, value extrapolated at low end; c, see result laboratory comment; d, diluted sample: method hi range exceeded; m, value is highly variable by this method; n, below the LRL and above the LT-MDL; t, below the long-term MDL.]

Date	cis-	cis-	Di-	Di-	Di-	Di-	Diiso-	Ethyl	Ethyl	Ethyl	Hexa-	Hexa-	
	1,2-Di-	1,3-Di-	bromo-	bromo-	chloro-	chloro-	propyl	methac-	methyl	benzene	chloro-	chloro-	
	ethene,	propene	methane	methane	fluoro-	methane	ether,	rylate,	ketone,	water,	buta-	ethane,	
	water,	water,	water,	water,	methane	water,	water,	water,	water,	unfltrd	water,	water,	
	unfltrd	unfltrd	unfltrd	unfltrd	wat unf	unfltrd	unfltrd	unfltrd	unfltrd	unfltrd	unfltrd	unfltrd	
	μg/L	μg/L	μg/L	μg/L	μg/L	μg/L	μg/L	μg/L	μg/L	μg/L	μg/L	μg/L	
	(77093)	(34704)	(32105)	(30217)	(34668)	(34423)	(81576)	(81577)	(73570)	(81595)	(34371)	(39702)	(34396)
Jul													
07...	<.02	<.10	<.1	<.04	<.14mc	<.04	<.1	<.06	<.1	<.16	<.04	<.1	<.1

WATER-QUALITY DATA
WATER YEAR OCTOBER 2007 TO SEPTEMBER 2008

Part 18 of 20

[Remark codes: <, less than; E, estimated; M, presence verified but not quantified. Value qualifier codes: b, value extrapolated at low end; c, see result laboratory comment; d, diluted sample: method hi range exceeded; m, value is highly variable by this method; n, below the LRL and above the LT-MDL; t, below the long-term MDL.]

Date	Iodo-	Iso-	Methyl	Methyl	Methyl	Methyl	meta-	Naphth-	Methyl	n-	n-	o-	
	methane	butyl	propyl-	acrylo-	acryl-	methac-	+ para-	alene,	n-butyl	n-Butyl	Propyl-	Xylene,	
	water,	ketone,	benzene	nitrile	ate,	rylate,	Xylene,	water,	ketone,	benzene	benzene	Xylene,	
	unfltrd	water,	water,	water,	water,	water,	water,	water,	water,	water,	water,	water,	
	unfltrd	unfltrd	unfltrd	unfltrd	unfltrd	unfltrd	unfltrd	unfltrd	unfltrd	unfltrd	unfltrd	unfltrd	
	μg/L	μg/L	μg/L	μg/L	μg/L	μg/L	μg/L	μg/L	μg/L	μg/L	μg/L	μg/L	
	(77424)	(78133)	(77223)	(81593)	(49991)	(81597)	(50005)	(85795)	(34696)	(77103)	(77342)	(77224)	(77135)
Jul													
07...	<.40mc	<.4	<.04	<.2	<.6	<.2	<.06	<.08	<.2	<.6	<.1	<.04	<.04

404450073470301 Local number Q 3660. 1—Continued

WATER-QUALITY DATA
WATER YEAR OCTOBER 2007 TO SEPTEMBER 2008

Part 19 of 20

[Remark codes: <, less than; E, estimated; M, presence verified but not quantified. Value qualifier codes: b, value extrapolated at low end; c, see result laboratory comment; d, diluted sample: method hi range exceeded; m, value is highly variable by this method; n, below the LRL and above the LT-MDL; t, below the long-term MDL.]

Date	sec-Butyl-benzene water, unfltrd µg/L (77350)	Styrene water, unfltrd µg/L (77128)	t-Butyl ether, water, unfltrd µg/L (50004)	Methyl t-butyl ether, water, unfltrd µg/L (78032)	tert-Butyl-benzene water, unfltrd µg/L (77353)	Tetra-chloro-ethene, water, unfltrd µg/L (34475)	Tetra-chloro-methane water, unfltrd µg/L (32102)	Tetra-hydro-furan, water, unfltrd µg/L (81607)	Toluene water, unfltrd µg/L (34010)	trans-1,2-Di-chloro-ethene, water, unfltrd µg/L (34546)	trans-1,3-Di-chloro-propene, water, unfltrd µg/L (34699)	trans-1,4-Di-chloro-2-butene, wat unf µg/L (73547)	Tri-chloro-ethene, water, unfltrd µg/L (39180)
Jul													
07...	<.04	<.04	<.04	.2	<.06	.49	<.08	<1	<.02	<.02	<.10	<.6	<.02

WATER-QUALITY DATA
WATER YEAR OCTOBER 2007 TO SEPTEMBER 2008

Part 20 of 20

[Remark codes: <, less than; E, estimated; M, presence verified but not quantified. Value qualifier codes: b, value extrapolated at low end; c, see result laboratory comment; d, diluted sample: method hi range exceeded; m, value is highly variable by this method; n, below the LRL and above the LT-MDL; t, below the long-term MDL.]

Date	Tri-chloro-fluoro-methane water, unfltrd µg/L (34488)	Tri-chloro-methane water, unfltrd µg/L (32106)	Vinyl chloride, water, unfltrd µg/L (39175)	Di-chloro-vos, water, fltrd, µg/L (38775)
Jul				
07...	<.08	.20	<.1	<.01mc